

DZNC

可程式深孔加工機

DZNC

DZNC

Our Machine is a Genius Programming Drilling Machine. You Don't Need to Set Working Parameter Just Only Input Electric Current. It is Very Convenient and Rapid For Users. There is Scale Assistant Function, and the Operation is Easy to Learn and Accuracy Processing.

**本機為智慧型可程式深孔加工機，
只要輸入加工電流，即可幫您自動
設定其餘加工參數，方便又快速！**

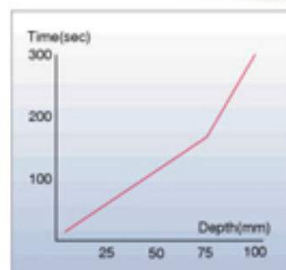
DZNC-26/36/46 series 系列

特性

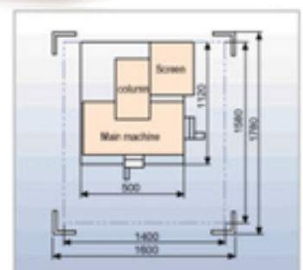
1. 操作簡單：僅需輸入所需之電流值，其餘之加工參數即可自動設定完成。(此乃本廠多年之加工操作經驗及加工業者所設定完成)
2. 加工參數修改容易：加工中可任意修改。
3. 加工速度快：以微電腦控制osc震盪輸出，加工速度快，可完成高硬度之加工。
4. 使用純水作加工液，安全，無污染。
5. 可加工各種之合金金屬，及各種不規則形狀，球型、圓錐等。
6. 可選擇高速度低耗加工方式。
7. 斷電記憶功能：停電後所有加工資料及加工位置皆可保持10年以上。

FEATURES

1. Easy to use: Don't need to set working parameter just only input electric current, and parameter is set automatically. (The above function is developed by our working experience and customer's request.)
2. Easy to change working parameter. You can revise working parameter in processing.
3. Rapid processing: OSC output controlled by micro-computer, rapid processing, and finished job in high precision.
4. We use the pure water for the cutting fluid, safety and no pollution.
5. Alloy metal of high hardness processing with difference shape, sphere, and curve in shape.
6. There are two ways to choose high speed or low wastage processing.
7. Memory function: Even electricity black out, the processing data and position can be memorized for over ten years.



Speed performance



unit: mm

Floor layout

CNC SMALL HOLE DRILLING MACHINE WITH AUTO TOOL CHANGER

自動換刀細孔機



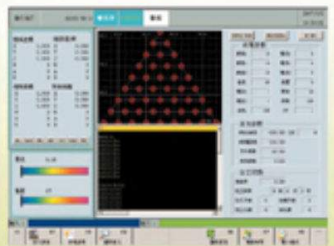
自動換刀相關設定頁面，顯示各把刀具的狀態，設定各個刀具是否開啓進行加工，以及在加工中是否啓動自動換刀功能。自動換刀功能開啓後，加工中當系統偵測到剩餘長度過短時，會啓動自動換刀程式 Setting page of ATC! It shows the status of every tool. Set up status of every tool to be operated for working or not & also automatically change tools during working condition. Once operating ATC function, when it detects short electrode during working, it will change tools automatically!



校模功能，可以進行尋邊、尋中心、尋溝槽等校模功能。設定正確的參數後，可以進行自動校模功能，也可以根據客戶的習慣，使用手動尋邊記錄後，進行計算。
Function of mould adjustment. You can do edge searching, center searching, groove searching & etc...! After setting up correct parameter, it can adjust mould automatically or after manual edge searching records, calculate data according to customer's habits.



系統參數設定。
Setting up system parameter



加工監視頁面，設計按鈕可以方便的切換：簡單穿孔放電、多孔加工及NC程式加工。顯示所有放電參數、放電相關設定及相關放電資訊。
Page of job monitoring. Easily to switch page by specially designed buttons: simple drill EDM, multi-holes machining & NC program machining. It shows all EDM parameters, relative setting and information of EDM!

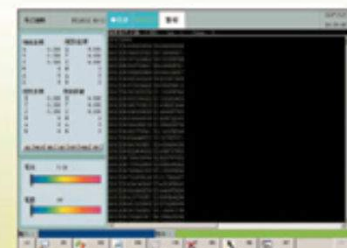


SDR56

新機種
New Machine



多孔加工設定，提供20個點的多孔加工放電表格供客戶隨意設定，選擇需要加工的孔，保存資料後，即可進行多孔加工，可以省去編寫程式的步驟。
Setting up multi-holes machining. It provides 20 holes discharging format for customer's editing. Choosing the required holes, save data & then start multi-holes machining. It saves time to edit program.



程式編輯頁面，可進行一些複製、粘貼、搜索、替換等編輯程式的功能。
Program editing page, you may go proceeding with copy, paste, search, replace & etc., program editing functions

CNC SMALL HOLE DRILLING MACHINE WITH AUTO TOOL CHANGER

自動換刀細孔機

機器特性

- 新型設計使佔地面積縮小化
- 視窗介面
- 觸控式螢幕
- 傳輸介面可以是RS232, USB或透過內部網路

FEATURES

- The new pattern will minimize the foundation area
- Windows Base
- Touch Screen
- Communication device can be through RS232, USB or Ethernet

Specifications 規格表

項目 Item	型號 Model	Unit	SDR56	
機械裝置 Mechanism				
最大工件	Max. work piece	mm	800 x 750 x 300	
最大工件重	Max. work piece weight	kg	1300	
工作台高度	Table to floor	mm	980	
X, Y 軸行程	X, Y Travel	mm	600 x 500	
Z 軸行程	Z Travel	mm	450	
W 軸行程	W Travel	mm	300	
傳動系統	Driver	mm	AC 伺服馬達 AC Servo motor	
床台移動最大速度	Table rapid feed	mm/min	3000	
機器淨重	Machine net weight	kg	2000	
佔地面積及高度	Foundation plan (LxWxH)	mm	2200 x 2200 x 2600	
電極直徑	Electrode pipe diameter		0.3~3.0 mm	
加工液處理系統 Water treatment				
水箱容量	Tank capacity	ℓ	230	
過濾模式	Filtering element		紙過濾系統 Paper filter system	
CNC裝置 CNC unit				
控制軸	Axis control		X, Y, Z, W	
最小設定單位	Min. setting	mm	0.001	
最小移動單位	Min. movement	mm	0.001	
螢幕	Monitor		15"觸控液晶螢幕 15" touch TFT monitor 1024x768	
輸入/輸出設定	I/O device		LAN / USB / RS-232C / 1.44MB FDD	
圖象顯示	Graphic display		2D / 3D	
程序儲存	Program storage		CF128M x 2	
控制單元裝置	Controller		64-bit Industrial PC 650MHz 128M SRAM	
自動換刀裝置 (選配) Automatic tool changer (Optional)				
刀柄形式	Type of tool shank		4 mm 鑽夾頭 4 mm Chuck	
容納數	Tool storage capacity	pcs	12	
加工電源 Power supply				
放電回路 Discharge loop	電晶體脈波迴路 Transistor	放電號碼 Discharge	0~512	電流段數 Current 1~14
停止電流 Off-time	1~999	休止off-time	1~999	間隙 GAP 1~127
伺服電壓 Servo voltage	0~80	電容 CAP	1~9	開路電壓 Open voltage 40v, 60v, 80v